

Standard Manual Control Point (MCP)



Features

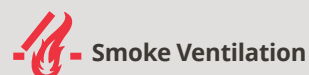
The MCP is designed to allow the Fire & Rescue Service to manually override the smoke control system through a user-friendly interface. Design includes an open button and a close/reset button, which are accessed by lifting the clear front door.

Fully complies to prEN12101 part 9.

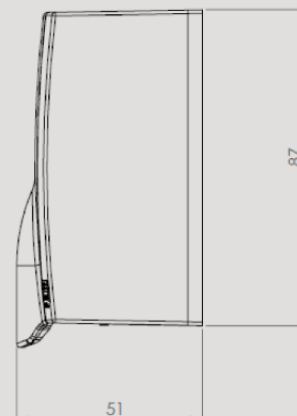
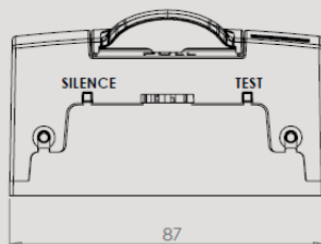
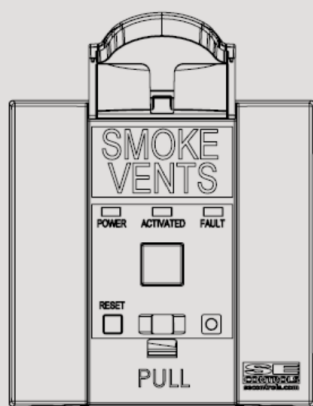
System status, operation, fault finding and cable monitoring is all included within the features of the MCP (OSLoop version only) as required by the standard.



Applications

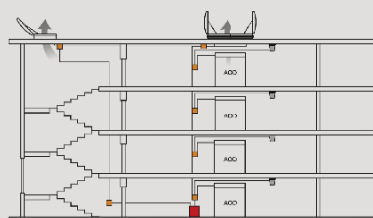


Technical Drawing



All dimensions in millimetres
The AutoCAD drawing for this product can be found at www.secontrols.com

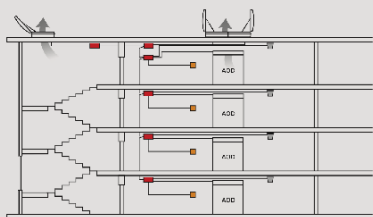
OSLoop Control System



Key

- OSLoop Coordinator
- Optical Smoke Detector
- Manual Control Point

OS2 Control System



Key

- OS2 Control Panel
- Optical Smoke Detector
- Manual Control Point

Technical Data

Device details

Tested prEN12101-9
Provided in orange (RAL 2011) as required as part of prEN12101-9
The device has the capabilities of providing audible signals and faults, along with having a silence button out of view
The MCP (OSLoop version) continuously monitors actuators and connections to smoke detectors (As required as part of prEN12101-2)
Maintenance indication (Statutory requirement of the Regulatory Reform Order (Fire Safety))
Cover reset push button via access key fob
Reset push button
Activated LED
Power/Healthy LED
Fault LED
Single action activation cover (replaces glass frangible element)

For use with 24 V OSLoop and OS2 Control Panels.

87 x 87 x 22 mm (h x w x d) - Flush mount
87 x 87 x 54 mm (h x w x d) - Surface mount

MCP Part Numbers

OSLoop MCP Part Numbers

Complete Unit	FCS00300027
MCP Module Assembly	FCS00300017
Adapter Plate Assembly	FCS00300018

OS2 MCP Part Numbers

Complete Unit	FCS00200080
MCP Module Assembly	FCS00200016
Adapter Plate Assembly	FCS00200017

Miscellaneous Item Part Numbers

Dumb Reset Key	FCS00200024
Surface Mount Box - RAL 2011 Orange	FYS15040061
MCP Finger Plate	FCS00200055