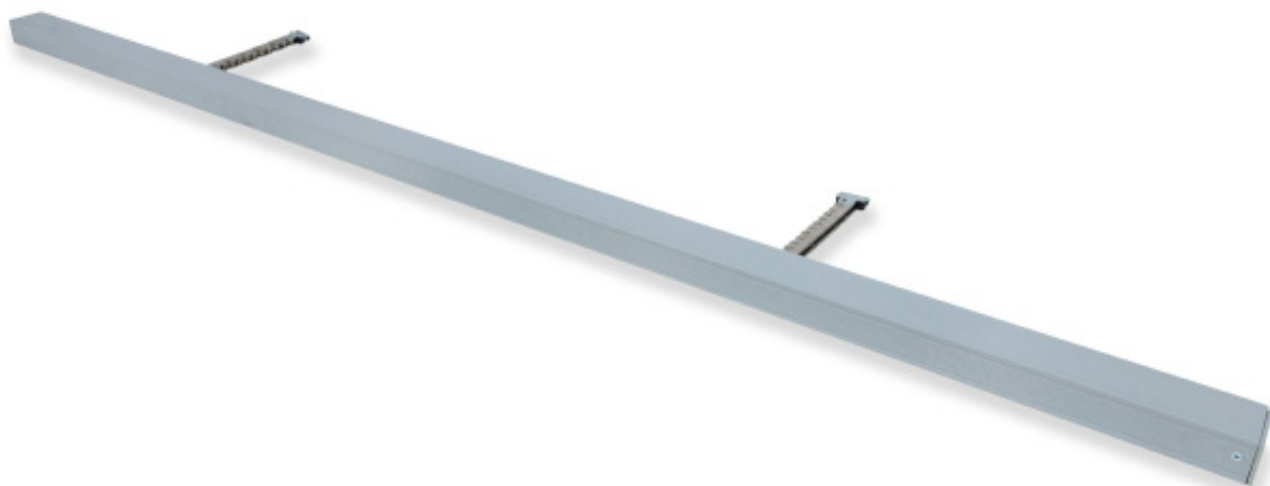


Twin SECO N 24 25

Chain Actuator / 24 V dc / 2 x 250 N



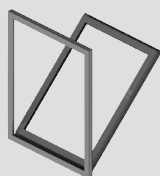
Chain Actuator / 24 V dc / 2 x 250 N

The Twin SECO N 24 25 is a compliant Chain Actuator designed to provide precise and reliable operation for Environmental Ventilation applications.

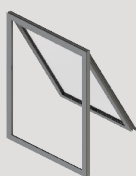
SE Controls manufacture this high-quality 'Made in Britain' actuator with the following features:

- Offers improved window performance and aesthetics for automated solutions
- 'Frequency of operation' data logging records every actuator movement
- Compact design with variable options for stroke length
- Standard finish is RAL 9006 (White Aluminum) but it can be customised to suit installation requirements
- Standard flex length is 2 m but this can be modified to suit installation requirements
- Standard range of pre selected quarter point bodies plus tailored lengths upon request.
- Extensive range of brackets to suit a variety of window systems
- Quiet operation with configurable speed control

Orientation



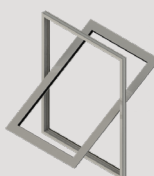
Bottom Hung



Top Hung



Side Hung



Centre Pivot



Applications



Environmental Ventilation

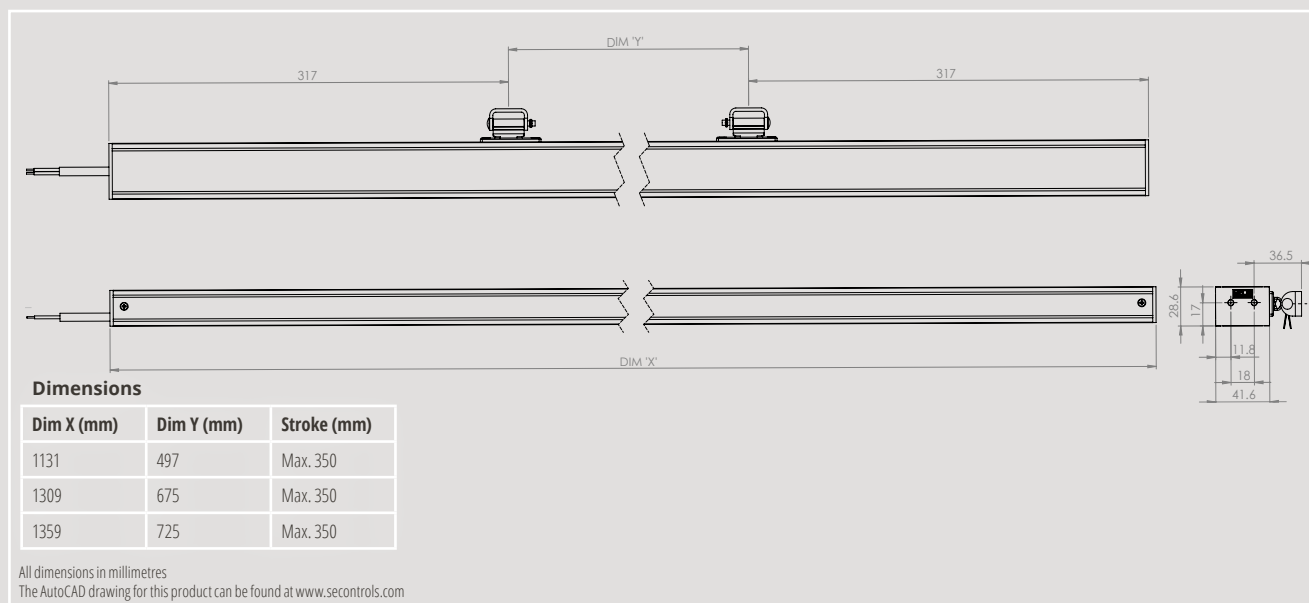
Controllers

Controller	No. Actuators ¹
3 AMP Transformer	3
NVLogIQ PSU	4
SHEVTEC Controller	8
30 AMP PSU	30

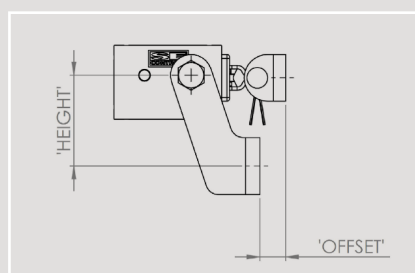
¹Recommended maximum number of actuators. The maximum number of actuators is based on optimum operating conditions, please contact SE Controls for more information.

NB: 24 V actuators require control from a compatible low voltage unit such as an OS2 SHEVTEC controller or NVLogIQ® PSU and permanent power should not be applied.

Technical Drawing



Standard Bracket Detail



Bracket Product Codes

	Height (mm)		
Offset (mm)	35	40	50
0	AKS18000001	AKS18000002	AKS18000003
5	AKS18050001	AKS18050002	AKS18050003
8	AKS18080001	AKS18080002	AKS18080003
10	AKS18100001	AKS18100002	AKS18100003
15	AKS18150001	AKS18150002	AKS18150003
20	N/A	N/A	AKS18200003



Please ensure the controllers have a minimum 1 second delay between switching if you are not using SE Controls products.

Technical Data

Actuator	Twin SECO N 24 25
Actuator Type	Chain Actuator
Voltage (all $\pm 5\%$)	24V dc
Amp Draw Current (with load)	>1.0 A
Stroke	20 mm - 350 mm (Configurable)
Operating Speed	min. 5 mm/sec (configurable)
Ambient Operating Temp	-5°C to +60°C
IP Rating	IP20
Thrust Force	2 x 250 N
Close Force	2 x 250 N
Clamping Force	2 x 4000 N
Soft Close	Yes
Switching	Electronic
Seal Relief	Programmable up to 20 mm
Synchronisation	Optional
Standard Finish	RAL 9006 (White Aluminium)
Powder Coated	
Colour Option	Other RAL colours available on request
Flex Length	2 m
Flex Type	2 core PVC 4 core (volt free contact) as option
Flex Colour	Grey
Duty Cycle	22% (approx. 2 mins on, 7 mins off)
Product Warranty	15,000 cycles, or 12 months ¹
Bracket	Sill fixing/ face fix
Application	Environmental Ventilation

¹ Commercial terms for each project will supersede this warranty information.

Product Codes

White Aluminium (RAL 9006)	Operating Voltage	Force	Stroke	Actuator Body Length	To Suit Vent Length
AAST250350S	24V	250 N	350 mm	1131 mm	1150 mm
AAST251350S	24V	250 N	350 mm	1309 mm	1350 mm