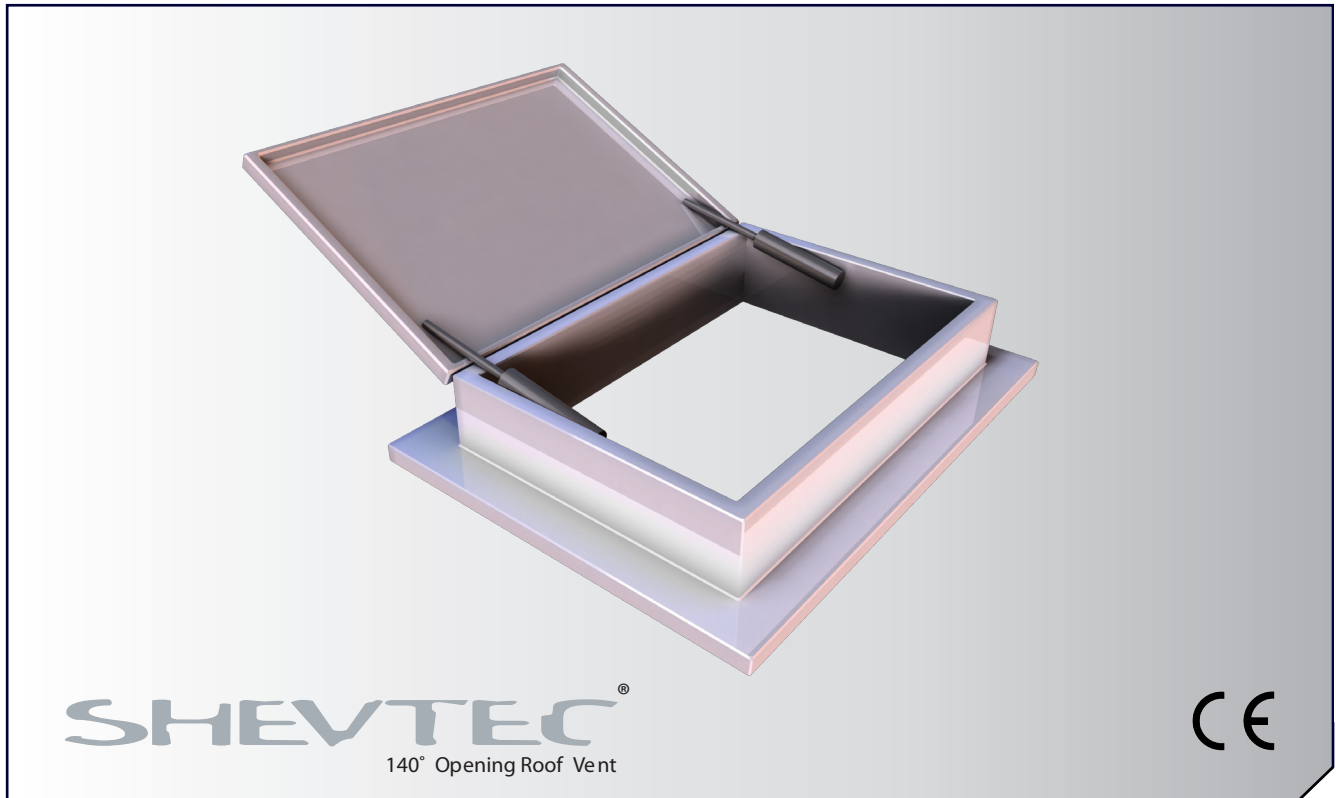


SHEVTEC® 140° Opening Roof Vent

Smoke Control for Roof Vents



SHEVTEC® 140° OPENING ROOF VENT

SHEVTEC® 140° Opening Roof Vent

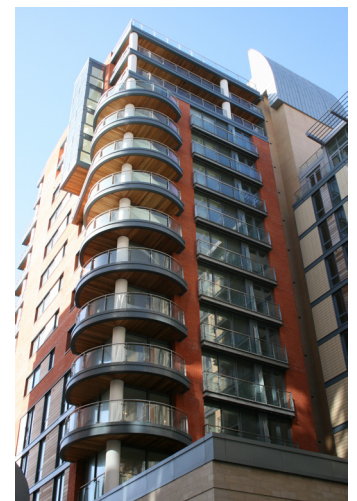
SE Controls SHEVTEC® 140° opening roof vent can be used in the head of the smoke shaft or escape stair to extract smoke from common corridors, escape stairs or lobbies to ensure safe escape for the occupants and to create a smoke free area for access to fire fighters. EN12101-2 requires that a single leaf opening roof vent should open to at least 140° to reduce the chance of a negative discharge occurring due to wind pressure.



For further information regarding specification detail please contact an SE Controls representative.

CE CERTIFIED

Compliant to applicable regulations.



SEC_4073.2 09/13