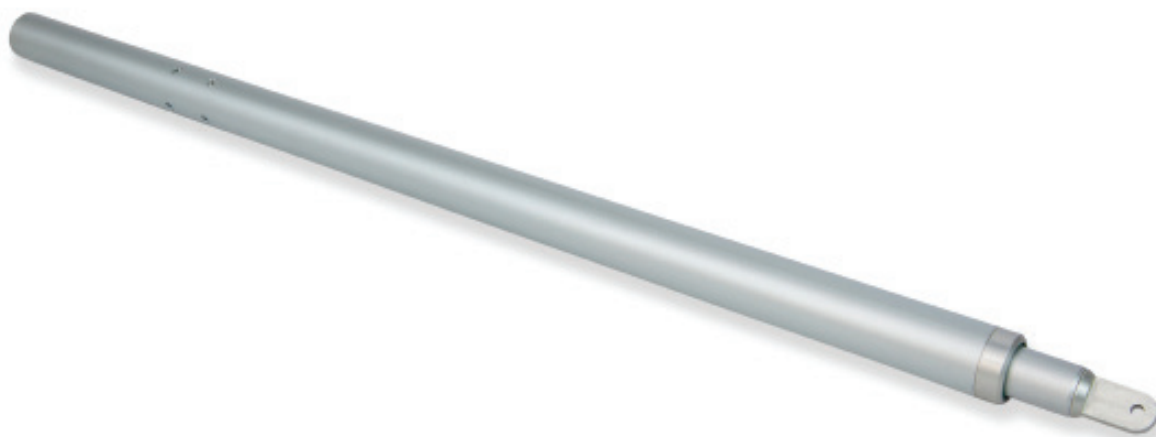


# TGLA 24 200

Stroke 300 / 500 / 750 / 1000mm



## Linear Drive Actuator / 24V dc / 2000N

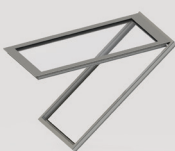
This is an extremely strong linear drive providing 2000N of force.

It is mainly used for sloping smoke ventilators and rooflight applications.

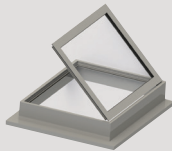
Large vents can be opened large distances due to the force and opening strokes available.

Standard finish is anodised aluminium.

## Orientation



Sloping Roof Vent



Roof Vent

## Accreditations

Certified and tested to EN 12101-2 2003 Annex G.



## Applications

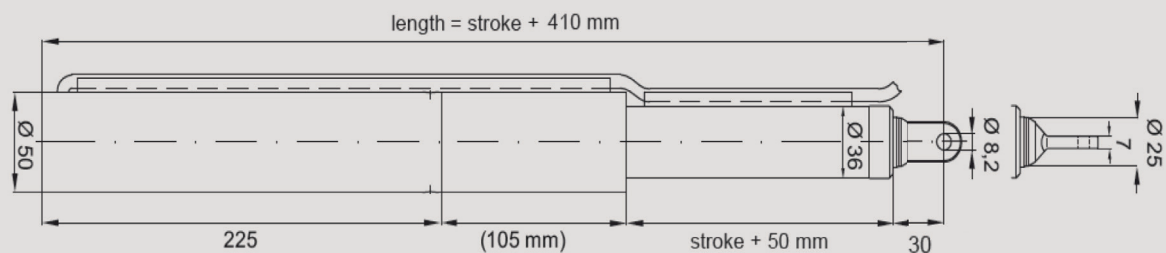


Environmental Ventilation



Smoke Ventilation

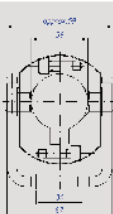
## Technical Drawing



For further dimensions see table below

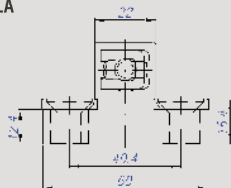
## Brackets

### Universal Bracket/ Lock Ring for TGLA 24 Linear Actuators



ABG65501000

### Vent Bracket for TGLA Linear Actuators



ABG65609021

## Product Codes

Stroke Y	No Limit	Signal Giver
300mm	*AAG20003005	*AAG20003006
500mm	*AAG20005005	*AAG20005006
750mm	*AAG20007505	*AAG2000751
1000mm	*AAG200010005	*AAG20001000

Contact for details of availability for product codes starting with \*.

## Technical Data

<b>Actuator</b>	TGLA 24 200 M1
<b>Type</b>	Linear
<b>Actuator Type</b>	Motorised
<b>Voltage (all +/-6%)</b>	24V dc
<b>Current Draw (Amp)</b>	3.0A
<b>Consumption (without load)</b>	72W
<b>Consumption (with load)</b>	72W
<b>Stroke</b>	300/500/750/1000mm
<b>Operating Speed</b>	10.7 mm/sec for No Limit 9.2 mm/sec for Signal Giver
<b>Ambient Operating Temp</b>	-5°C +75°C
<b>Thrust Force</b>	2000N
<b>Close Force</b>	2000N
<b>Switching</b>	External limit required
<b>Type of Switch</b>	Absorption
<b>Standard Finish</b>	Silver Anodised
<b>Colour Option</b>	Other RAL colours available on request
<b>Window Min. Height</b>	Contact for details
<b>Flex Length</b>	2000mm
<b>Flex Type</b>	2 core 1.5 mm for No Limit Silicon White. 2 core 1.5 mm and 3 core 0.5 mm for Signal Giver Silicon White.
<b>Insulation Class</b>	Contact for details
<b>IP Rating</b>	IP54
<b>Product Warranty</b>	10,000 Cycles (each direction)
<b>Clamp Ring</b>	Yes
<b>U Bracket</b>	Yes
<b>Application</b>	Environmental and Smoke Ventilation

These actuators require control from a compatible low voltage unit such as OS2. Contact an SE Controls sales representative for recommendations.