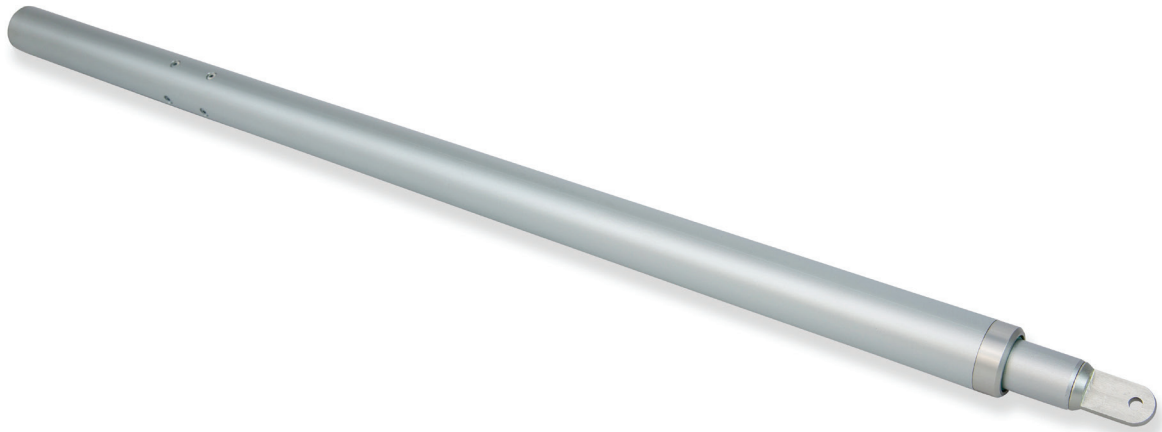


TGLA 24 150

Stroke 100 / 165 / 200 / 300 / 400 / 500 / 600 / 750 / 1000mm



Linear Drive Actuator / 24V dc / 1500N

High quality, extremely strong linear drive mainly used for sloping smoke ventilator and rooflight applications.

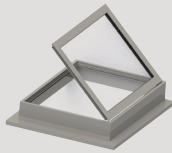
Large vents can be opened large distances due to the force and opening strokes available.

Standard finish is anodised aluminium.

Orientation



Sloping Roof Vent



Roof Vent

Accreditations

Certified and tested to EN12101-2.



Applications

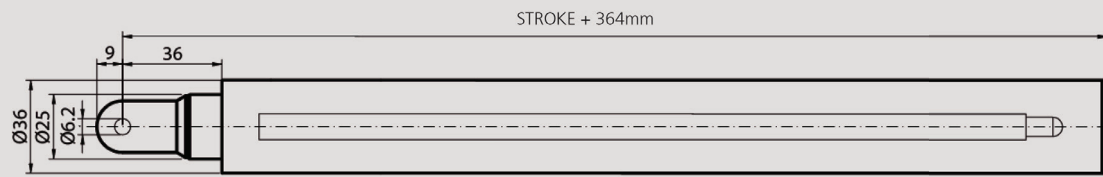


Environmental Ventilation



Smoke Ventilation

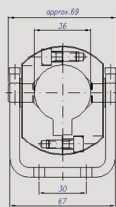
Technical Drawing



For further dimensions see table below

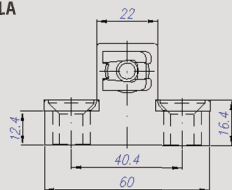
Brackets

Universal Bracket/ Lock Ring for TGLA 24 Linear Actuators



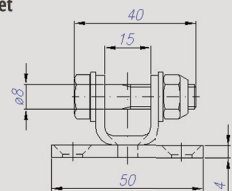
ABG65501000

Vent Bracket for TGLA Linear Actuators



ABG65609021

Trunnion Top Bracket



ABG65609040

Product Codes

Stroke Y	No Limit	Signal Giver
100mm	*AAG15001000	*AAG15001006
165mm	*AAG15001650	*AAG15001656
200mm	*AAG15002000	*AAG15002006
300mm	*AAG15003000	*AAG15003000
400mm	*AAG15004000	*AAG15004006
500mm	*AAG15005000	*AAG15005002
600mm	*AAG15006000	*AAG15006006
750mm	*AAG15007507	*AAG15007506
1000mm	*AAG15010000	*AAG15010006

Contact for details of availability for product codes starting with *.

Technical Data

Actuator	TGLA 24 150
Type	Linear
Actuator Type	Motorised
Voltage (all +/-6%)	24V dc
Current Draw (Amp)	1.6A
Consumption (without load)	39W
Consumption (with load)	39W
Stroke	100/165/200/300/400/500/600/750/1000mm
Operating Speed	5.1mm/s
Ambient Operating Temp	-5°C +75°C
Thrust Force	1500N
Close Force	1500N
Switching	Electronic limit
Type of Switch	Absorption
Standard Finish	Silver Anodised
Colour Option	Other RAL colours available on request
Window Min. Height	Contact for details
Flex Length	1000mm
Flex Type	2 x 0.75 mm for No Limit and 4 x 0.5 mm for Signal Giver Silicon White
Insulation Class	Contact for details
IP Rating	IP54
Product Warranty	10,000 Cycles (each direction)
Clamp Ring	Yes
U Bracket	Yes
Application	Environmental and Smoke Ventilation

These actuators require control from a compatible low voltage unit such as OS2.