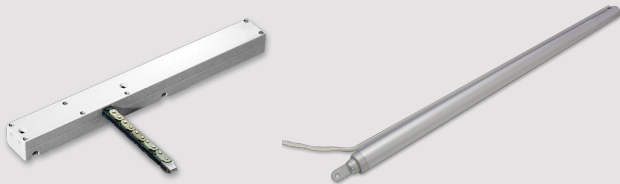


Top Hung AOV



Top Hung AOV

Applications



Features:

Top hung window opened and closed proportionally by a chain or linear actuator to enable natural ventilation

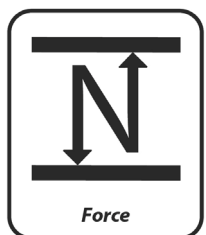
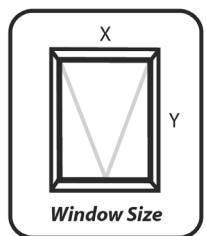
Chain actuators are more commonly installed. Any motor specified must provide sufficient power to support the maximum load that occurs when the window is fully opened. Open in and open out applications are possible

Force:

Force calculation is a factor when selecting the appropriate actuator. Sloping vents generally need more force to open than a typical vertical top or bottom hung vent. Linear actuators tend to be better suited to this type of application. Other factors such as snow & wind loading may need to be taken into account.

Vent Size:

The size of the window or vent to be opened is crucial for the actuator selection process. It is important to ensure weather performance when a vent is closed. This may be achieved by using more than one actuator or by using automatic multi point locking. In both instances care must be taken to ensure the compatibility of components.



CE CERTIFIED

Compliant to applicable regulations.

Version 3