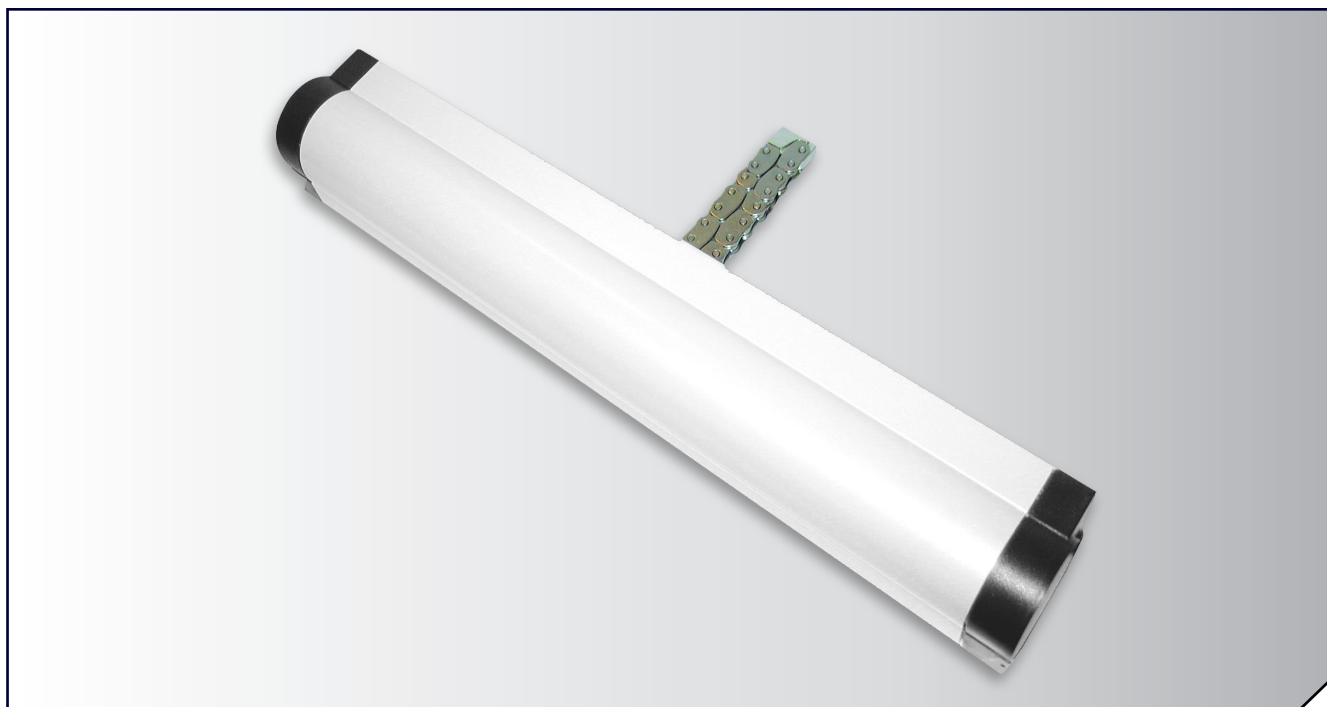


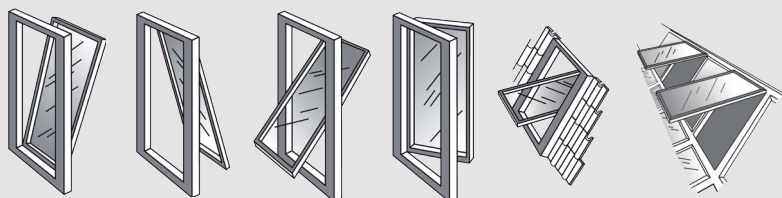
TGCO 450



Stroke 194 / 309 / 401 mm

CHAIN DRIVE ACTUATOR 230V ac 450N

Applications



Features:

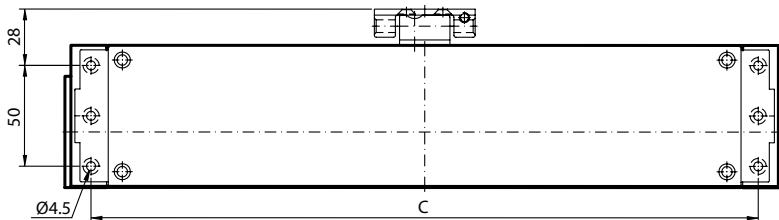
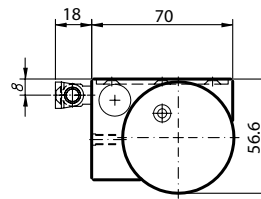
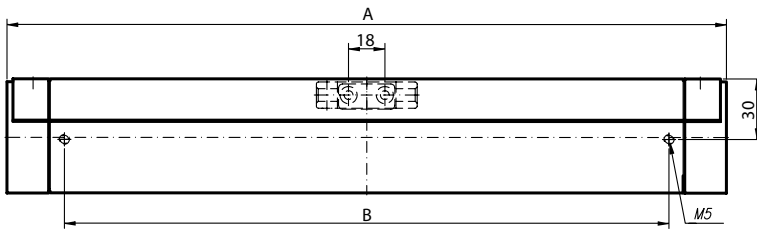
High quality chain actuator mainly used for natural ventilation window applications.

Can be used for smaller sloping vents due it's double strength chain.



TGCO 450

Technical Drawing



Stroke	A	B	C
194mm	449mm	300mm	331mm
309mm	449mm	392mm	423mm
401mm	541mm	484mm	515mm



230V ac
450N

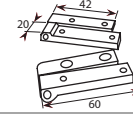
The AutoCAD drawing for this product can be found at www.secontrols.com

Technical Data

Connections

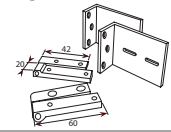
ACTUATOR	TGCO 450
TYPE	MOTORISED
ACTUATOR TYPE	CHAIN OPENING
VOLTAGE (all +/-6%)	230V ac
AMP DRAW CURRENT (no load)	0.23A
AMP DRAW CURRENT (with load)	0.23A
CONSUMPTION (without load)	53W
CONSUMPTION (with load)	53W
STROKE	194/309/401mm
OPERATING TIME	10mm/s
AMBIENT OPERATING TEMP.	0°C +70°C
THRUST FORCE	450N
CLOSE FORCE	450N
SOFT CLOSE	NO
SWITCHING	Physical limit
TYPE OF SWITCH	Electronic
STANDARD FINISH	Silver/grey
COLOUR OPTION	Powder coated White or Grey
POWER OUT FIXING	NO
WINDOW MIN HEIGHT	See table
FLEX LENGTH	3000mm
FLEX TYPE	4 core/ 0.50mm PVC black
INSULATION CLASS	H
PROTECTION DEGREE	IP20
PRODUCT LIFE	10,000 STROKES (each direction)
WEIGHT	Contact for details
FACE FIX	Standard
THROUGH BODY FIX	NO
PIVOT BRACKET	YES (specify)
U BRACKET	N/A
OPEN IN	YES
USAGE	NATURAL

TGCO (24) 100-700
Bottom Hung Pivot
Brackets



ABG67001040

TGCO (24) 100-700 Top
Hung Pivot Brackets



ABG670010(1-2)

Designed for windows/vents down to a minimum height of 800mm.

These actuators require instruction from a 230v control unit.

Recommended Control:

Contact an SE Controls sales representative for recommendations.

Product	Operating voltage	Force	Stroke	WHITE	SILVER
Chain Actuator	230V ac	450N	194mm	*DAG4500194W	*DAG4500194S
	230V ac	450N	309mm	*DAG4500309W	DAG4500309S
	230V ac	450N	401mm	*DAG4500401W	*DAG4500401S

Contact for details of availability for product codes starting with *.

Stroke & Minimum window/vent height:

194mm / 300mm
309mm / 600mm
401mm / 800mm



Voltage to 230V chain actuators must be switched off after each operation with a rest period required between cycles.

Version 2.0