

SHEVTEC® Damper

Smoke Control for Smoke Shafts



SHEVTEC® DAMPER

SHEVTEC® Damper

In the event of a fire the SHEVTEC® damper powers open its blades on the corresponding floor of the fire in conjunction with the top of shaft roof vent to allow the flow of smoke to be ventilated into the smoke shaft and out of the building. All dampers on the remaining floors will remain closed to reduce smoke leakage and the risk of the fire spreading to additional floors. A fully tested aluminium smoke SHEVTEC® damper is available in 0.5, 1.0 & 1.5m² applications and can be powder coated or fitted with a decorative grille to provide a practical and aesthetic solution.



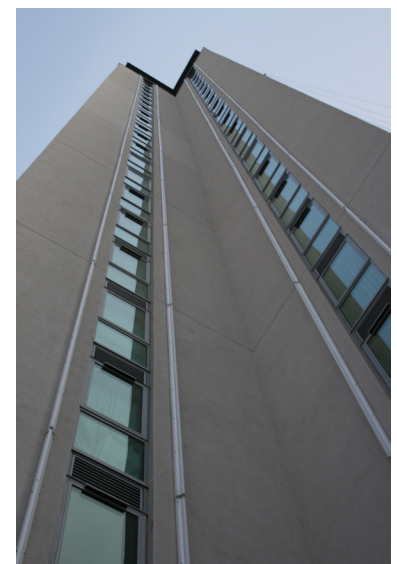
Features

- 1.5mm Galvanised steel construction
- Motor open, motor closed or spring return operation
- Smooth parallel blade operation
- Low leakage rate
- High Free area design
- Optional Decorative Fascia grilles.

For further information regarding specification detail please contact an SE Controls representative.

CE CERTIFIED

Compliant to applicable regulations.



Version 2.1