

OS2

Type 23 BBU - Flexible & Efficient Control System

CONTROL PANEL **OS2** TYPE 23 BBU



OS2 Type 23 BBU Control Panel

The ultimate 24v DC motor operating control that fulfils the simplest stand alone system through to a fully networked intelligent SHEV system with BMS interface. Every OS2 Type 23 BBU controller operates on a mains voltage primary power supply and contains integral fully monitored and intelligent 72 hours battery back-up for secondary power operation.

OS2 Type 23 BBU has been designed to be easy to install whilst providing robust and reliable control. Operation and control is compatible with OS2 MCPs and a host of peripheral control products.



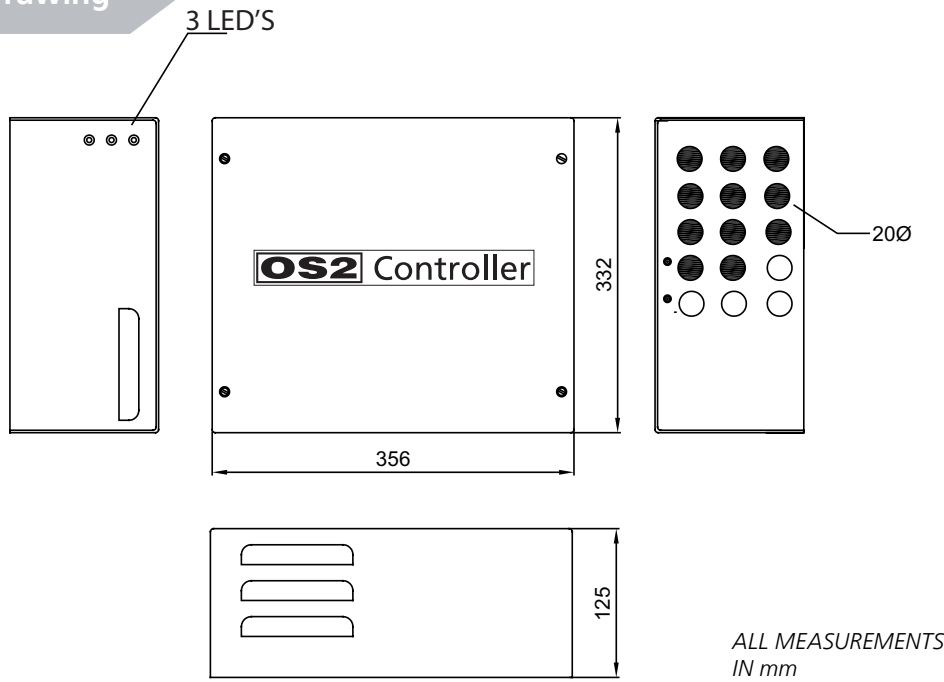
CE CERTIFIED

Compliant to applicable regulations.



Version 2.1

Technical Drawing

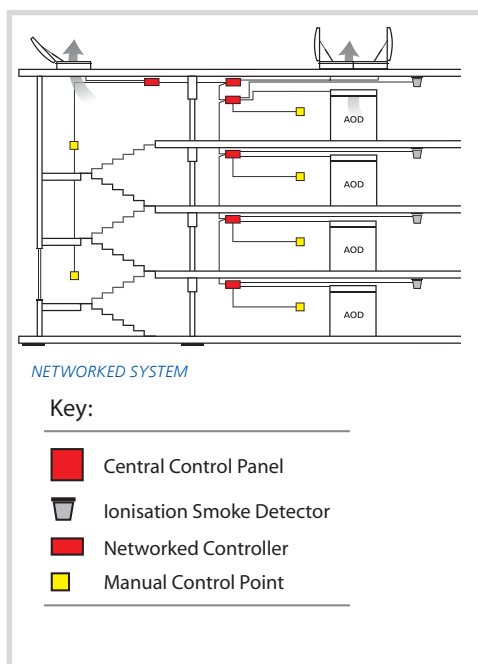


24V dc

The AutoCAD drawing for this product can be found at www.secontrols.com

Technical Data

Connections



Power

- Class 1
- Supply 230V ac 50/60 Hz 2A max. from a 3A fused un-switched spur
- Output 24V dc 2-Channels Combined output not to exceed 12A intermittent (6mins in any 1 hour)/8A continuous
- Backup Battery 2x12Vdc 7Ah Sealed Lead-Acid Batteries
- Expected battery life 3+ years (can be reduced, dependant upon use) – Batteries monitored by unit
- Real time clock battery average life 10 Years

Environment

- IP Rating 20
- Humidity Range 10 to 90% Non-Condensing
- Storage -20 to + 75 °C
- Operating temp -10 to +50 °C

Miscellaneous

- Dimensions 332 x 356 x 156 mm
- Mass Approx 13kg

CE CERTIFIED

Compliant to applicable regulations.

OS2 TYPE 23 BBU CONTROL PANEL Part Number: **FCS 0020 0019**

Version 2.1