

OS2 Modular Control System



OS2

CONTROL PANELS

Features:

The OS2 Modular Control System is an expanded version of the single zone OS2, FCS 0020 0001.

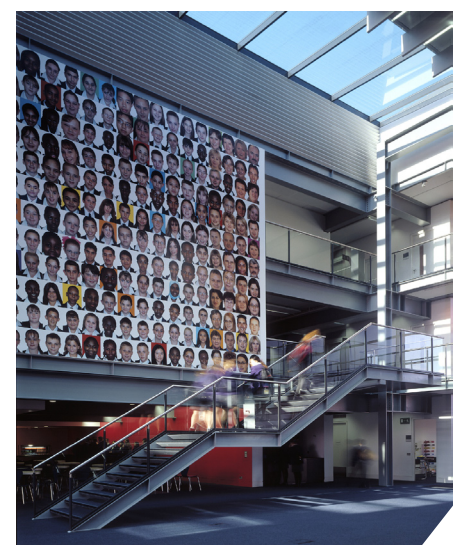
The OS2 Modular Control System has been designed to be flexible for its intended application by providing a CE marked smoke ventilation control system that can be interconnected to form a large centralised networked system on a module by module basis.

The panel can receive 0-10V inputs from a BMS system if required and in the event of a power failure, battery back up is provided for each module to ensure operation of the particular zone.



CE CERTIFIED

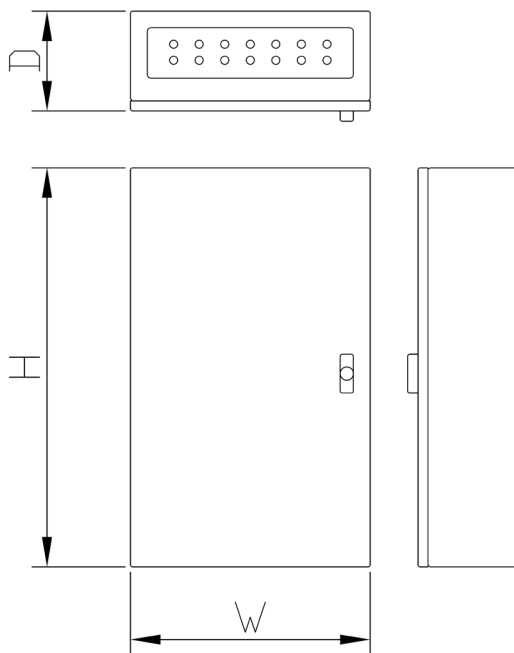
Compliant to applicable regulations.



Unit comes in a standard GREY Powder coated enclosure



Version 2.0



Enclosure Dimensions

600 x 600 x 250
800 x 600 x 250
1000 x 600 x 250
1200 x 600 x 300

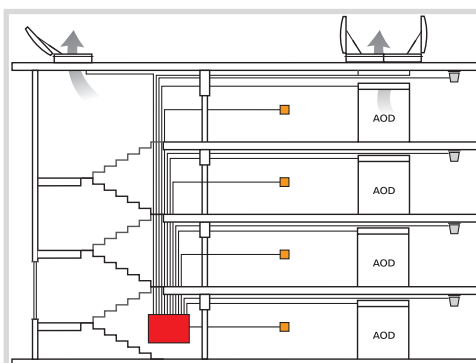
ALL MEASUREMENTS
IN mm (H x W x D)



24V dc

The AutoCAD drawing for this product can be found at www.secontrols.com

Typical Schematic



Key:

- Central Control Panel
- Ionisation Smoke Detector
- Networked Controller
- Manual Control Point

Connections



Device Details:

Each module delivers the following:

Power

Class 1
Supply 230V ac 50/60 Hz from a 3A fused un-switched spur
Current Rating 2A
Output 24V dc 2-Channels Combined output not to exceed 8A intermittent (6mins in any 1 hour)/5A continuous
Backup Battery 2x12Vdc 2.2Ah Sealed Lead-Acid Batteries
Expected battery life 5+ years (can be reduced, dependant upon use) – Batteries monitored by unit
Real time clock battery average life 10 Years

Environment

IP Rating 65
Humidity Range 10 to 90% Non-Condensing
Storage -20 to +75 °C
Operating temp -10 to +50 °C

For more information

To find out more about OS2, the new, flexible, efficient and reliable automatic window and ventilation system, contact our sales team on +44 (0)1543 44 30 60

Enclosure Dimensions (H x W x D) (mm)	Number of modules	Part Number	Number of Batteries
Enclosure 600 x 600 x 250	2	FCS 0020 2005	4 (FYS1200 0000)
Enclosure 800 x 600 x 250	3	FCS 0020 3005	6 (FYS1200 0000)
Enclosure 1000 x 600 x 250	4	FCS 0020 4005	7 (FYS1200 0000)
Enclosure 1200 x 600 x 300	5	FCS 0020 5005	10 (FYS1200 0000)
Enclosure 1200 x 600 x 300	6	FCS 0020 6005	12 (FYS1200 0000)