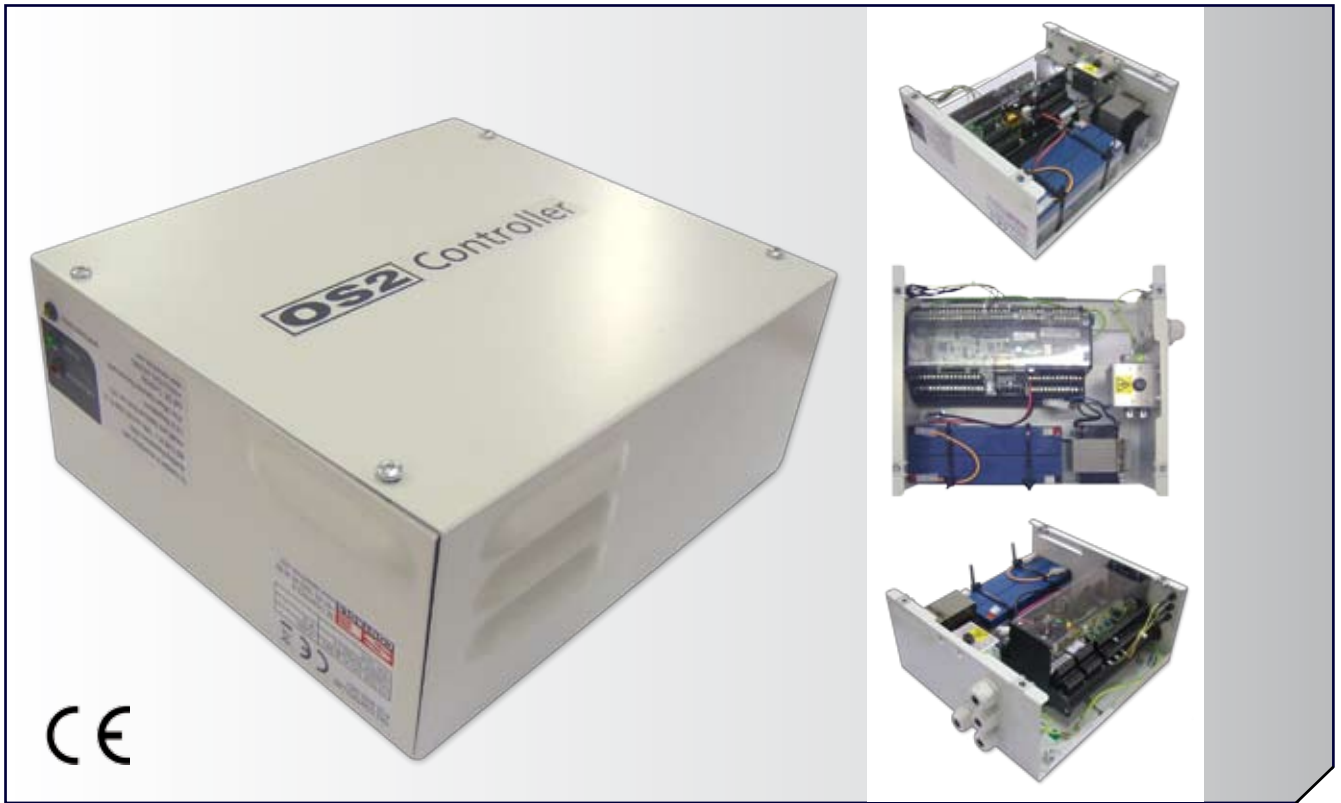


OS2 Flexible & Efficient Control



OS2

CONTROL PANELS

Features:

The ultimate 24V dc motor operator that fulfils the simplest stand alone system through to a fully networked intelligent fire alarm and BMS interface system.

OS2 can also be a controls network in it's own right.



CE CERTIFIED

Compliant to applicable regulations.

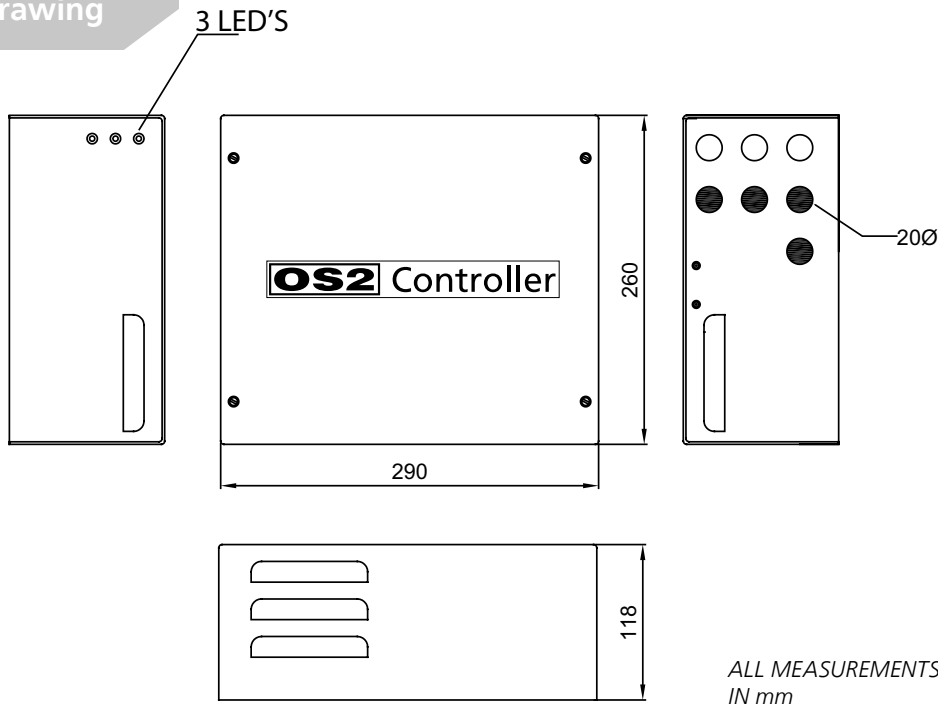


Unit comes in a standard GREY Powder coated enclosure



Version 2.0

Technical Drawing

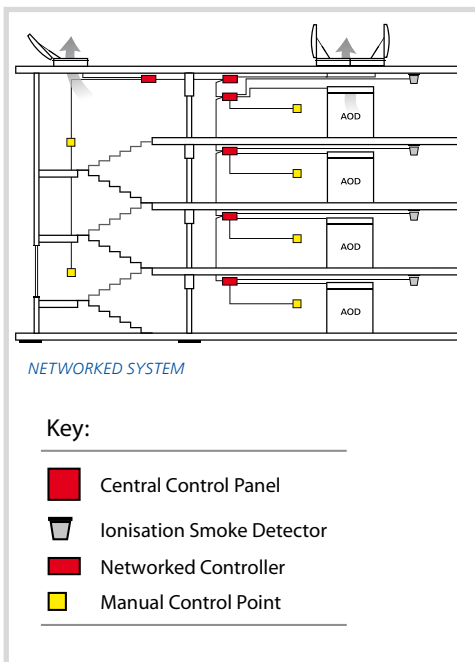


24V dc

The AutoCAD drawing for this product can be found at www.secontrols.com

Typical Schematic

Connections



Device Details:

Power

Class 1
 Supply 230V ac 50/60 Hz from a 3A fused un-switched spur
 Current Rating 2A
 Output 24V dc 2-Channels Combined output not to exceed 8A intermittent (6mins in any 1 hour)/5A continuous
 Backup Battery 2x12Vdc 2.2Ah Sealed Lead-Acid Batteries
 Expected battery life 5+ years (can be reduced, dependant upon use) – Batteries monitored by unit
 Real time clock battery average life 10 Years

Environment

IP Rating 20
 Humidity Range 10 to 90% Non-Condensing
 Storage -20 to + 75 °C
 Operating temp -10 to +50 °C

Miscellaneous

Dimensions 290x260x118mm
 Mass Approx 8kg

For more information

To find out more about OS2, the new, flexible, efficient and reliable automatic window and ventilation system, contact our sales team on +44 (0)1543 44 30 60

OS2 CONTROL PANEL Part Number: **FCS 0020 0001**

Version 2.0