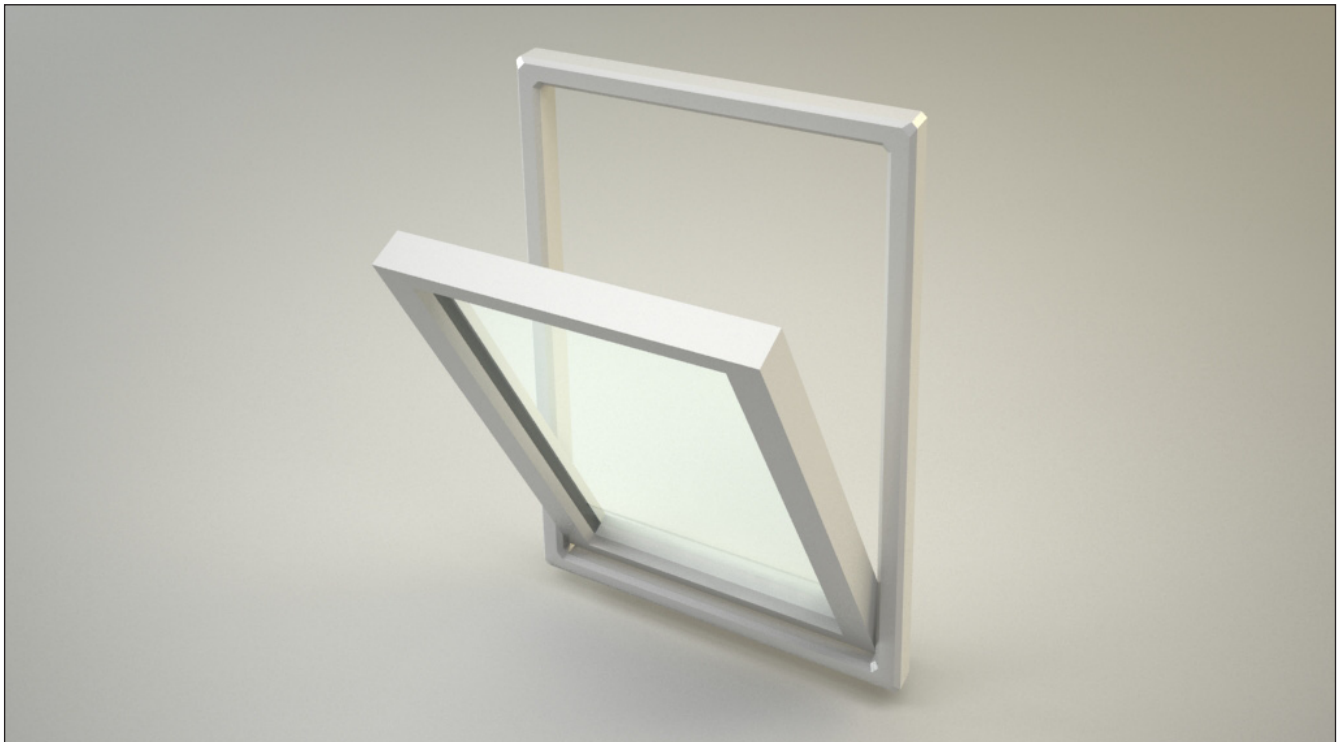
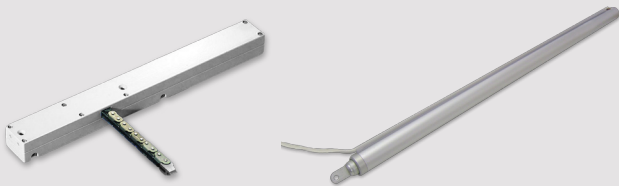


EN12101-2 Bottom Hung AOV



EN12101-2 Bottom Hung AOV

Applications



Features:

Fully tested and certified bottom hung automatically opening smoke ventilator CE marked to EN12101-2 for use in facades.

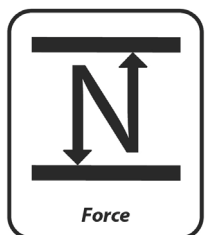
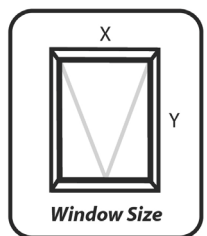
Chain actuators are more commonly installed. These applications usually are suited to actuators with lower thrust force. Open in and open out applications are possible. Bottom hung windows must be fitted with restrictions.

Force:

Force calculation is a factor when selecting the appropriate actuator. Sloping vents generally need more force to open than a typical vertical top or bottom hung vent. Linear actuators tend to be better suited to this type of application. Other factors such as snow & wind loading may need to be taken into account.

Vent Size:

The size of the window or vent to be opened is crucial for the actuator selection process. It is important to ensure weather performance when a vent is closed. This may be achieved by using more than one actuator or by using automatic multi point locking. In both instances care must be taken to ensure the compatibility of components.



CE CERTIFIED

Compliant to applicable regulations.

Version 3