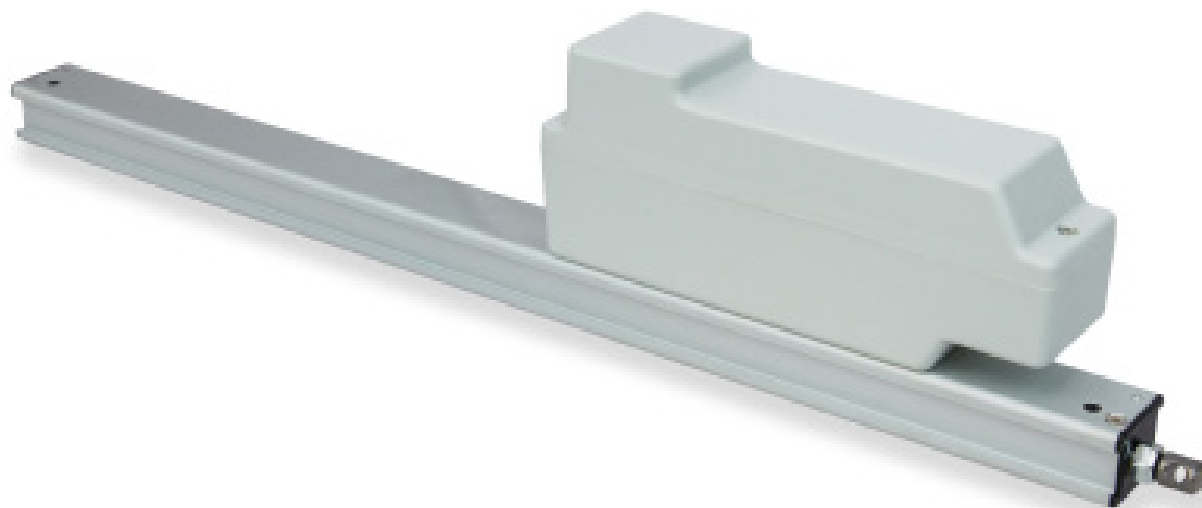


# SELA U 24 75

Stroke 180 / 350 / 550 / 750 / 1000mm

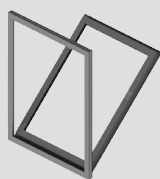


## Linear Drive Actuator / 24V dc / 750N

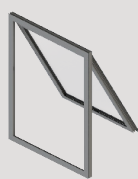
Cost effective and strong rack and motor drive mainly used for sloping smoke vent and rooflight applications.

Two push points from a single motor can be provided via a connecting rod and secondary rack.

### Orientation



Bottom Hung



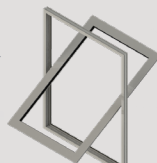
Top Hung



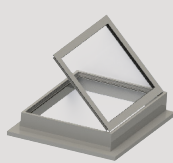
Side Hung



Sloping Roof Vent



Centre Pivot



Roof Vent

### Accreditations

Certified & tested in accordance with EN12101-2.



### Applications



Environmental Ventilation



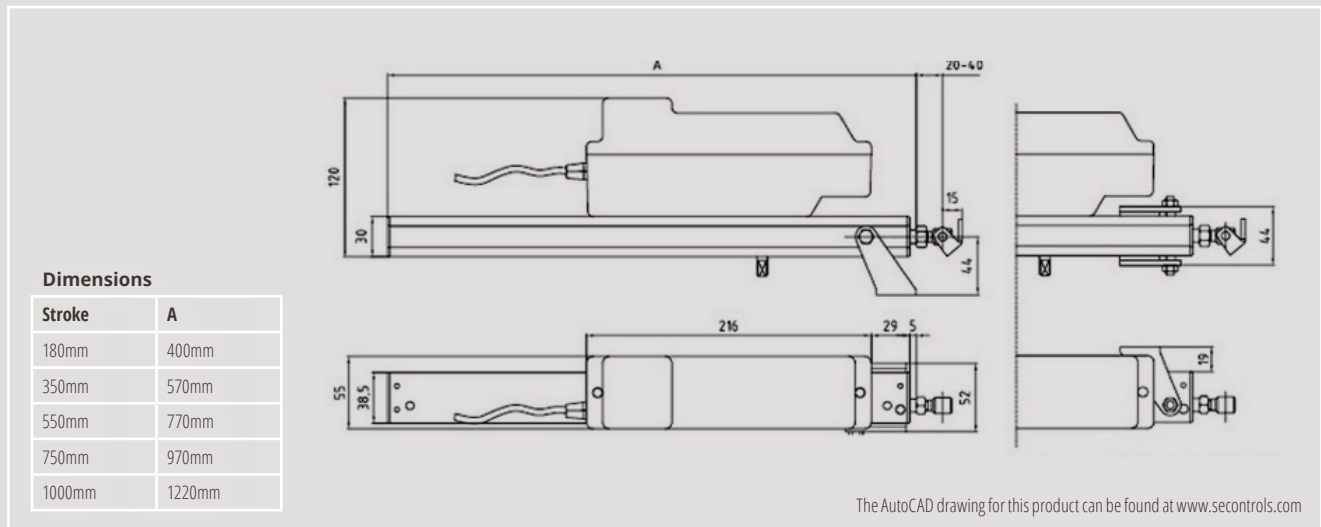
Smoke Ventilation

NB: 24V actuators require control from a compatible low voltage unit such as an OS2 SHEVTEC controller or NVLogiQ® PSU and permanent power should not be applied.

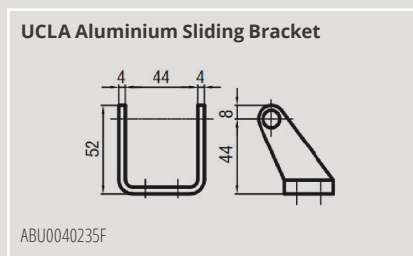
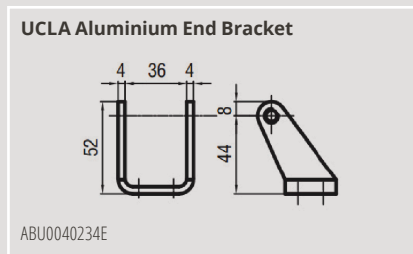


Please ensure the controls have a delay between switching if you are not using SE Controls products.

## Technical Drawing



## Brackets



## Technical Data

<b>Actuator</b>	SELA U 2475
<b>Type</b>	24V dc Rack & Pinion Linear
<b>Voltage (all +/-6%)</b>	24V dc
<b>Current Draw (Amp)</b>	1A
<b>Stroke</b>	180/350/550/750/1000mm
<b>Operating Speed</b>	8mm/s
<b>Ambient Operating Temp</b>	-10°C + 40°C
<b>Thrust Force</b>	750N
<b>Close Force</b>	650N
<b>Switching</b>	Electronic Limit
<b>Standard Finish</b>	Silver Anodised
<b>IP Rating</b>	IP55
<b>Product Warranty</b>	10,000 Strokes
<b>Application</b>	Environmental and Smoke Ventilation

## Product Codes

Silver Anodised	Stroke
AAU07500180	180mm
AAU07500350	350mm
AAU07500550	550mm
AAU07500750	750mm
AAU07501000	1000mm